

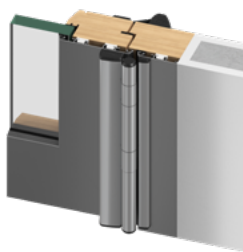
**ONE PRODUCT FOR MANY APPLICATIONS**

# Protective system BR<sup>+</sup>

**MODULAR SYSTEM FOR FLUSH DOORS WITH KNUCKLE HINGES**



timber fire door



timber - aluminium door



aluminium door



steel door



multifunction steel door

## **SAFE AND FINE ADJUSTMENT TO AVOID SHEARING POINTS**

- / slotted holes for secure mounting and 2D fastening element for tight fit
- / profiles infinitely variable with patented height adjustment - no relining necessary!
- / profiles demountable for maintenance purposes

## **ATTRACTIVE DESIGN WITH MORE SAFETY**

- / tamper-proof fastening due to concealed screws
- / end caps on the profile prevent butt edges due to a radius > 2 mm
- / compliance with max. 4 mm opening gap acc. to DGUV and 8 mm acc. to EN 16005 by fine adjustment

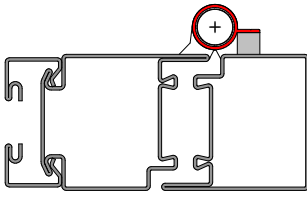
## **SIMPLE, QUICK AND SAFE MOUNTING, WITHOUT COMPLEX RELINING**

- / align the profiles in the alignment of the belt without marking
- / press the profiles on between the hinges without tools using adhesive pads
- / fix with suitable self-drilling screws without predrilling and countersinking

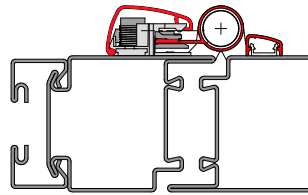
Align. Press on. Fix. Done!

# New: the + in adjustability and mounting safety

Old vs. new - the advantages of installing the BR+ at a glance.



- / installation previously with relining
- / cost-intensive installation



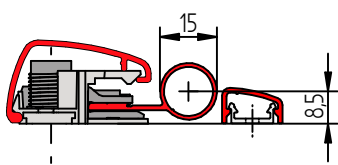
- / assembly new: matching solution with the BR+
- / system quickly adjustable

## ADDITIONAL INFORMATION

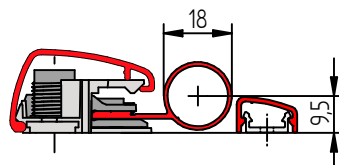
- / Can be retrofitted to all flush doors with knuckle hinges
  - whether manual or automated as well as on fire & smoke protection doors in coordination with the manufacturer - athmer provides support
- / high quality aluminum profiles, maintenance free
- / profiles for self-cutting with suitable fastening material
- / set delivery lengths for door leaf heights: 2,100 mm, 2,250 mm and 2,400 mm
  - standard-compliant protection for nursery and automatic doors
- / special lengths without adapter on request
- / **NEW:** order made to measure according to measurement sheet and save even more time during installation
- / Standard color: silver anodized C-0, C-31, RAL 9016, individual colors available
- / more information: [www.athmer.com/br-plus](http://www.athmer.com/br-plus)



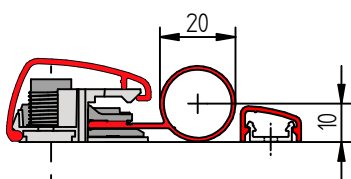
## VARIANTS



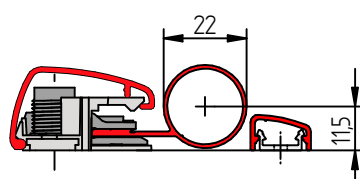
BR-15+



BR-18+

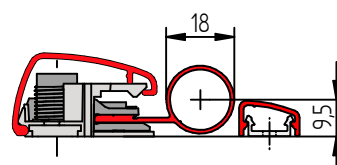


BR-20+

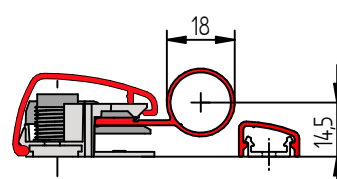


BR-22+

## HEIGHT ADJUSTMENT



max. height adjustment 5 mm



measuring sheet

installation video